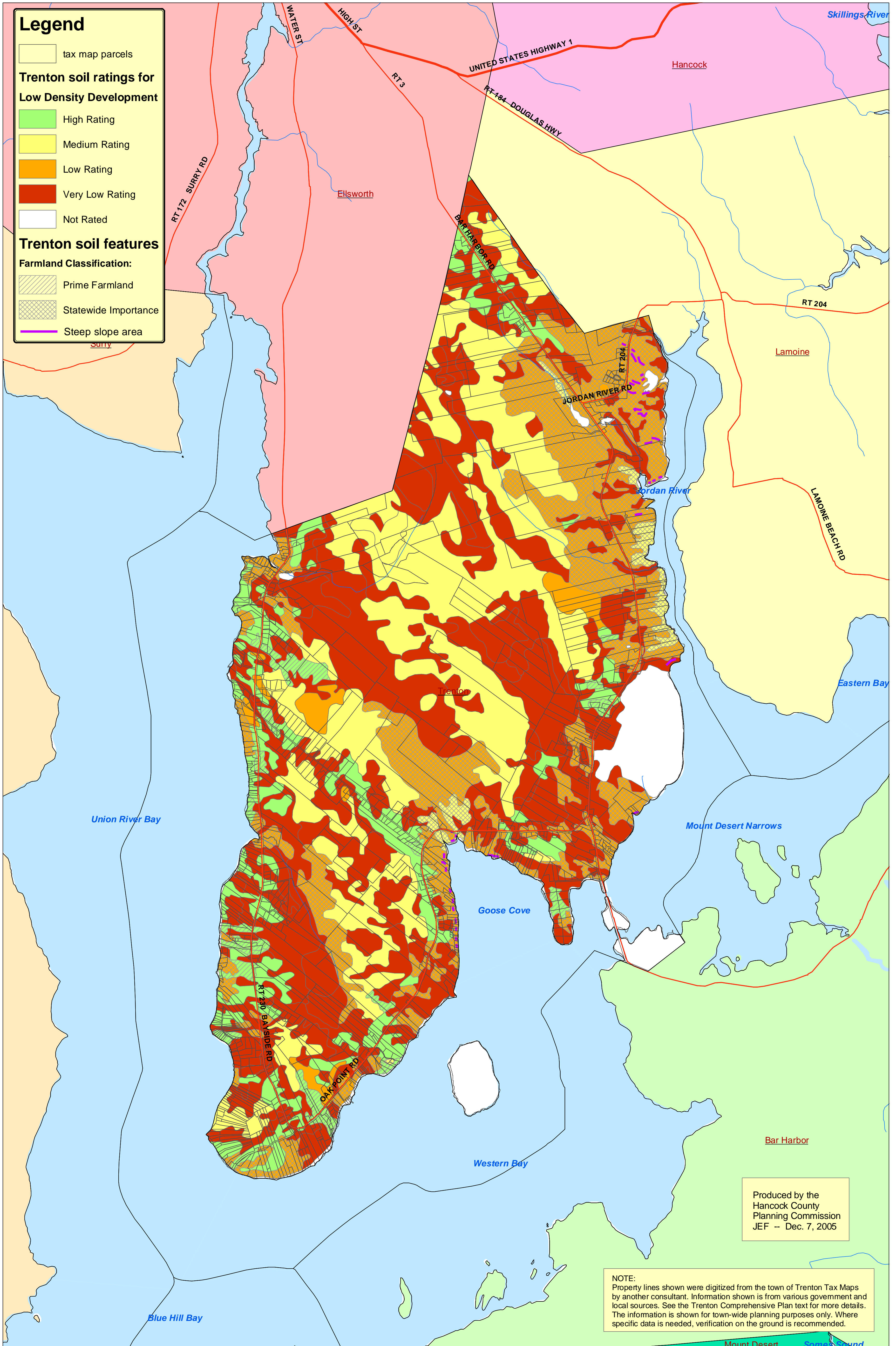
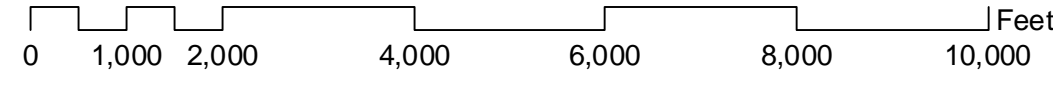


Town of Trenton COMPREHENSIVE PLAN

SOILS

MAP #7

1 inch equals 2,000 feet



Legend

- tax map parcels
- Trenton soil ratings for Low Density Development**
 - High Rating
 - Medium Rating
 - Low Rating
 - Very Low Rating
 - Not Rated
- Trenton soil features**
 - Farmland Classification:**
 - Prime Farmland
 - Statewide Importance
 - Steep slope area

Produced by the
Hancock County
Planning Commission
JEF -- Dec. 7, 2005

NOTE:
Property lines shown were digitized from the town of Trenton Tax Maps by another consultant. Information shown is from various government and local sources. See the Trenton Comprehensive Plan text for more details. The information is shown for town-wide planning purposes only. Where specific data is needed, verification on the ground is recommended.