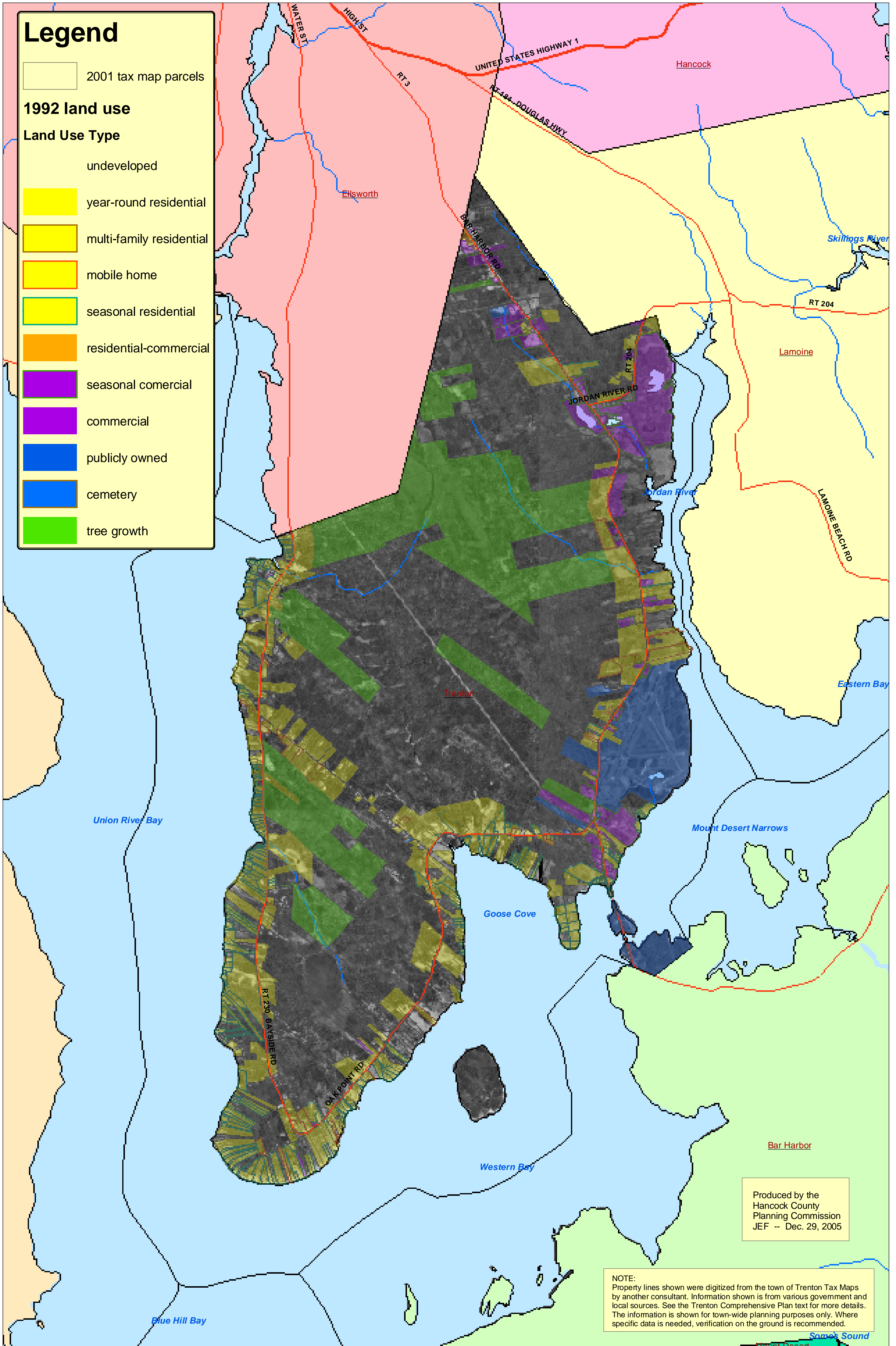
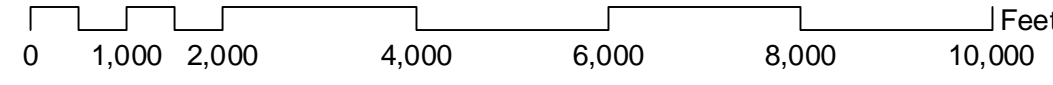


Town of Trenton COMPREHENSIVE PLAN

**LAND USE and
OWNERSHIP TYPES**

MAP #2A

1 inch equals 2,000 feet



Legend

2001 tax map parcels

1992 land use

Land Use Type

- undeveloped
- year-round residential
- multi-family residential
- mobile home
- seasonal residential
- residential-commercial
- seasonal comercial
- commercial
- publicly owned
- cemetery
- tree growth

Produced by the
Hancock County
Planning Commission
JEF -- Dec. 29, 2005

NOTE:
Property lines shown were digitized from the town of Trenton Tax Maps by another consultant. Information shown is from various government and local sources. See the Trenton Comprehensive Plan text for more details. The information is shown for town-wide planning purposes only. Where specific data is needed, verification on the ground is recommended.