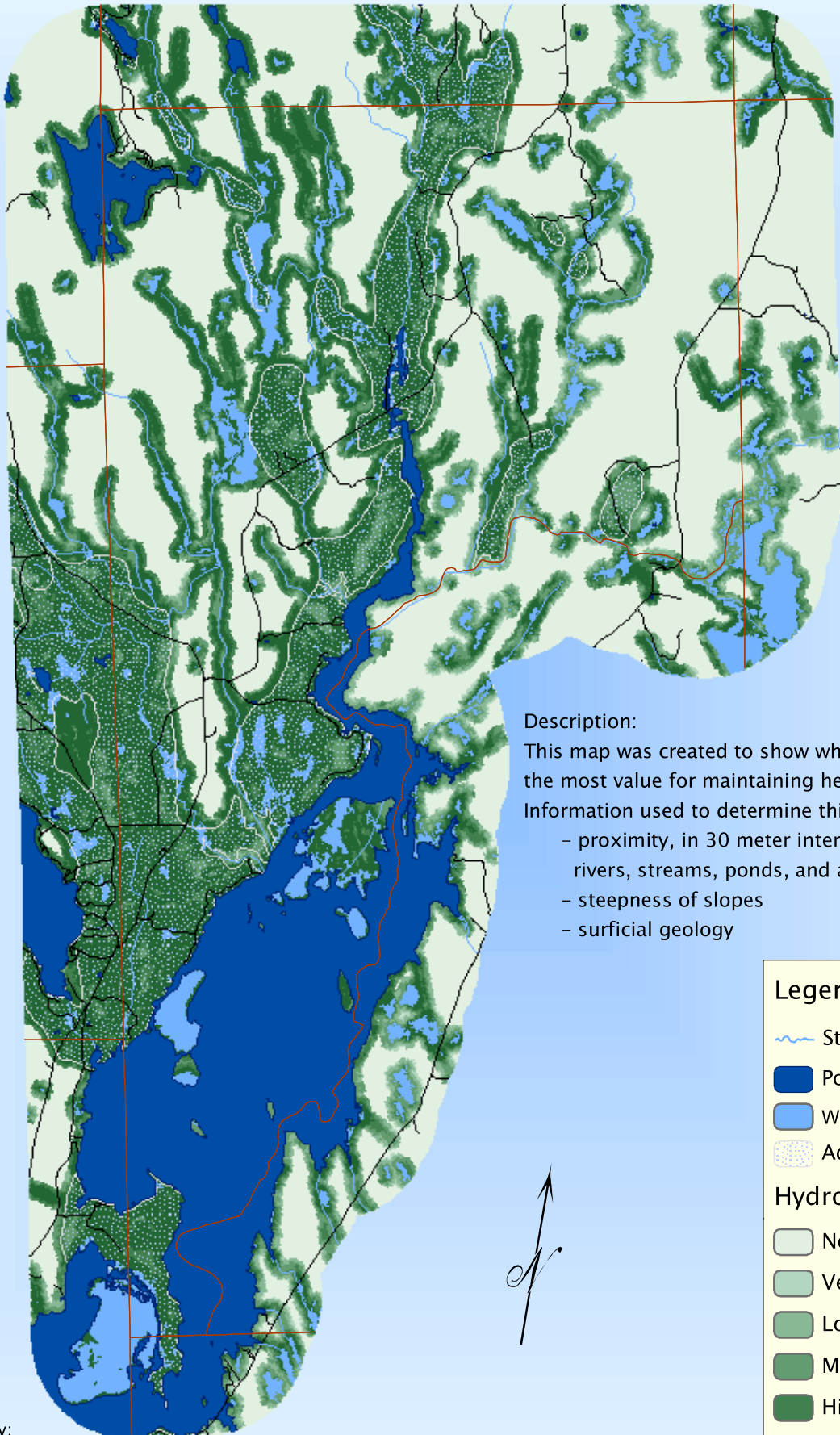


Mariaville - Hydrology




Description:

This map was created to show which lands have the most value for maintaining healthy water systems.

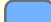
Information used to determine this included:


- proximity, in 30 meter intervals, of wetlands, rivers, streams, ponds, and aquifers
- steepness of slopes
- surficial geology

Legend


 Streams


 Ponds

 Wetlands


 Aquifers

Hydrological Value


 No Value

 Very Low

 Low

 Medium

 High

 Very High