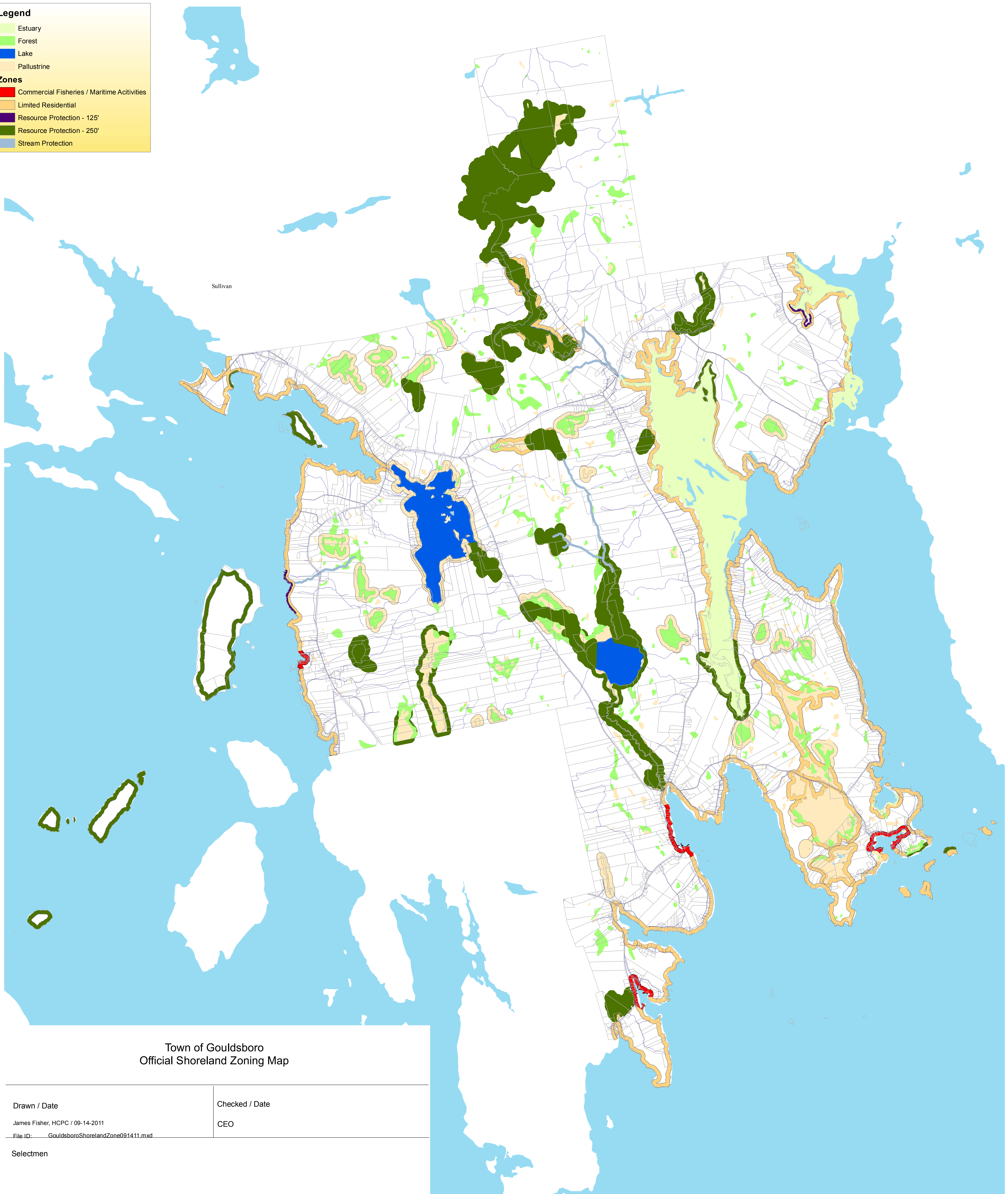


Legend

- Estuary
- Forest
- Lake
- Pallustrine

Zones

- Commercial Fisheries / Maritime Activities
- Limited Residential
- Resource Protection - 125'
- Resource Protection - 250'
- Stream Protection



Town of Gouldsboro
Official Shoreland Zoning Map

Drawn / Date
James Fisher, HCPC / 09-14-2011
File ID: GouldsboroShorelandZone091411.mxd

Checked / Date
CEO

Selectmen

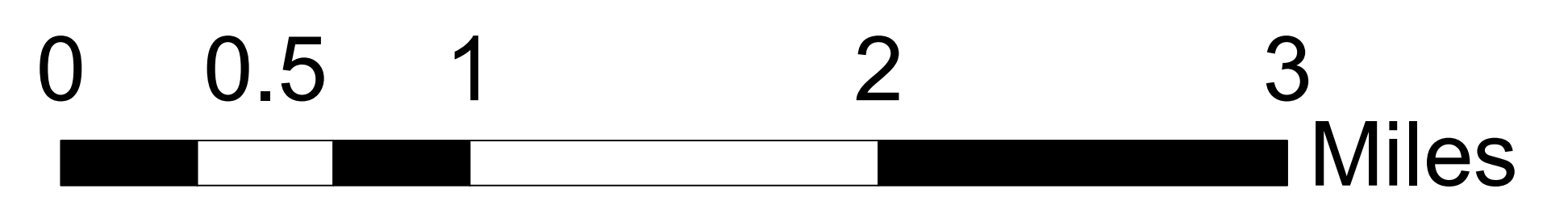
A True Copy

Attest: _____

Town Clerk

Date Approved

This map is for zoning purposes and should not be used for conveyances. Resource Protection Zones were determined by the Department of Environmental Protection and Inland Fisheries and Wildlife, and are shown in approximate locations.



1 inch = 2,000 feet